

Distributed by:

Manufactured by:



The Kace Building, Victoria Passage, Wolverhampton,
West Midlands WV1 4LG, United Kingdom
Company Reg No: 04383577 Vat No: 836 8531 02
www.mdti.co.uk email: info@mdti.co.uk
Telephone: +44 (0) 1902 778380 Facsimile: +44 (0) 1902 421360



Please read carefully
before assembling.
Always fully follow the
instructions before use.

HVS Hoo-kOn™ IV/Fluid Stand

Modular Lightweight Portable Community Drip Stand
Model number: 40142

Instruction Manual

1. Diagram

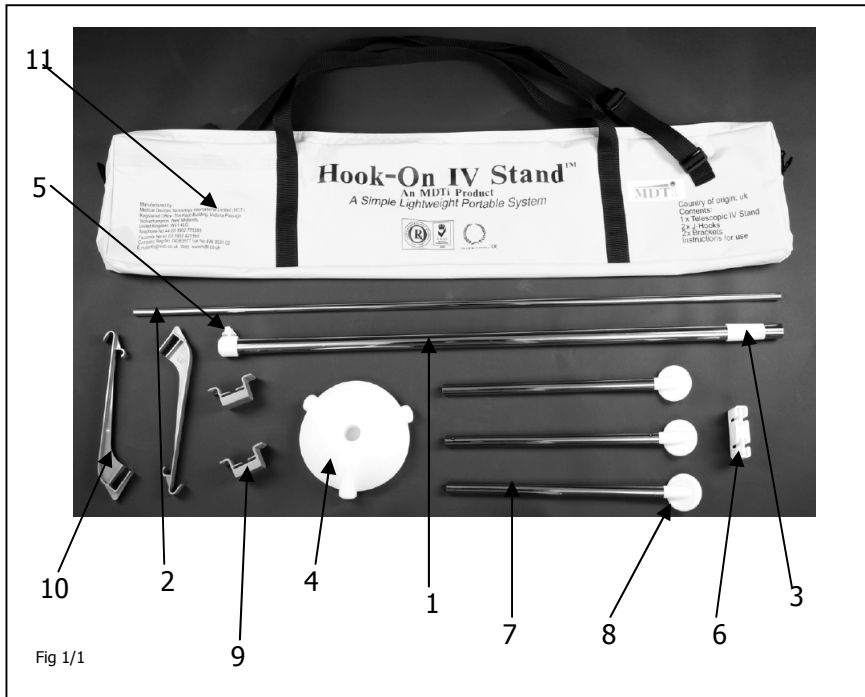


Fig 1/1

- 1 Base Pole x 1
- 2 Telescoping Pole x 1
- 3 Stabilising & Release collar x 1
- 4 Central Support x 1
- 5 Pole Securing Screw x 1
- 6 Telescoping Pole Cradle x 1
- 7 Central Support leg x 3
- 8 Stabilising foot x 3
- 9 Cradle bracket x 2
- 10 IV/fluid hook x 2
- 11 Carrying case

9. UK Help
MDTi Care 01902 778380

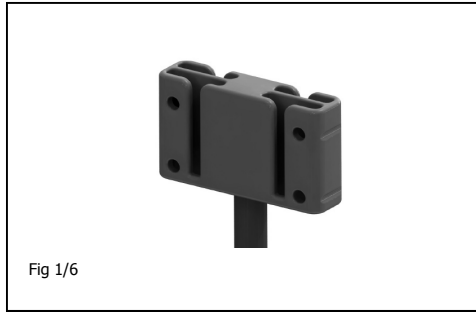
Monday – Friday. 9.00am to 5.00pm.
An answerphone will be available out of these hours. Any queries or concerns about using your Hoo-kOn™ IV/fluid Stand call MDTi Care. Calls are charged at the UK normal rate. For all web enquiries please visit www.mdti.co.uk.



10. Technical Specification

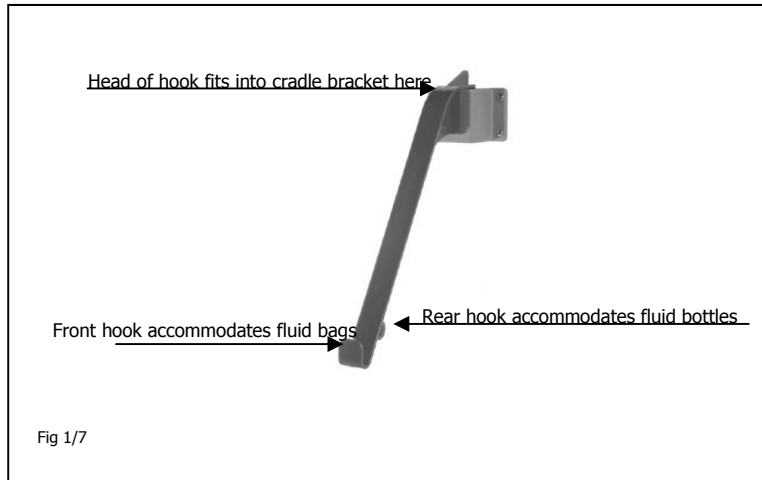
Material:	Polysulphone POM C9021 & Chrome plated Steel
Conformity:	Medical Devices Directive 93/42/EC
Autoclave Cycles:	100
Plastic Soften Temperature:	150 °
Plastic Melt Temperature:	166 °
Total Weight of IV Stand	1.9 Kg
Product Shelf Life:	5 years
Manufacturer's Certificate Approvals	ISO 9001:2000 ISO 13485:2003 ISO 14001:2004 LRQA 4003482/A

5. Apply the Cradle to the top of telescoping pole by pushing the item down onto the pole until it is firmly in place.



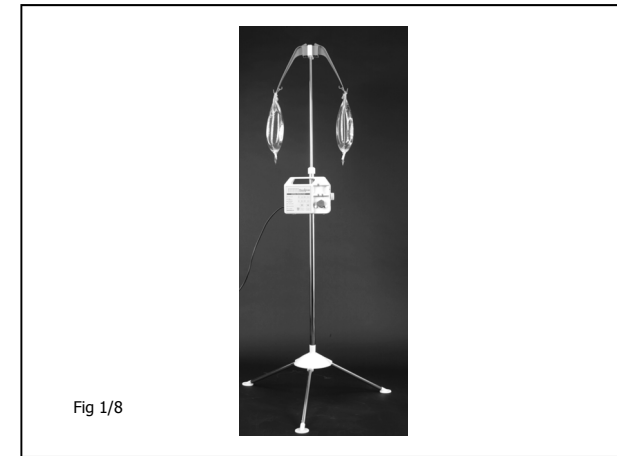
6. Slot one or two Cradle brackets onto the Cradle, the wings on the bracket will slot between the two 'T' shapes on the Cradle. Always ensure that the 'T' shape design on the back of the Cradle bracket is upright mirroring the 'T' shapes on the cradle.

7. The Cradle bracket accommodates the IV/fluid hook, 15mm (Lilac) or 21mm (Turquoise). The hook is used to hold either a fluid bag on the front of it or a fluid bottle on the back of it. The Lilac hook slots directly in the 'T' of the bracket whilst the Turquoise fits over the 'T' Shape of the bracket.



4. How to use the Hoo-kOn™ Stand

1. The stand has been so designed to allow for ease of assembly in less than 2 minutes and is able to be assembled in any required location quickly. Its lightweight design allows for it to be picked up and placed in a position that allows IV/Fluid therapy to be given effectively.



2. The stand can be mounted with an IV Pump, it is recommended that if a pump is to be used, that it is attached to the highest point of the Base Pole over a leg of the stand close to the Pole Securing Screw.

3. The stand can be used either with one Cradle bracket and IV/Fluid hook or with both Cradle brackets and hooks in place. Weights applied over legs.

4. The stand has been designed to be used within a Community or Emergency environment or any difficult terrain that requires IV/fluids to be administered quickly.

WARNING: Avoid moving stand when an IV pump is mounted, it is advised that the pump should be first removed prior to placing stand in required position and then to remount pump.

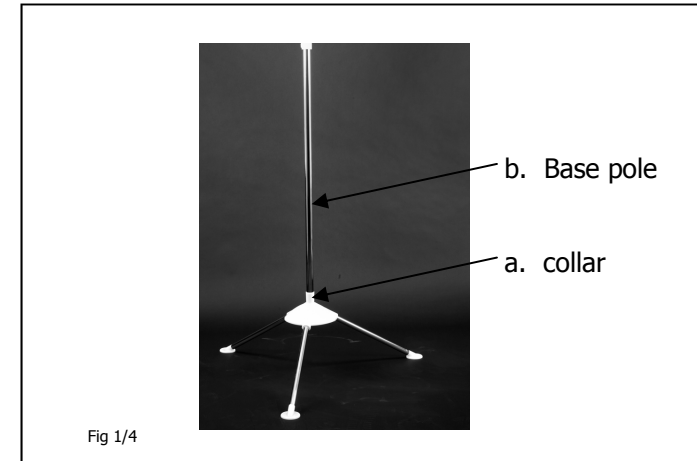
5. Accessory

All components of the Hoo-kOn™ stand come within its own individual carrying case.

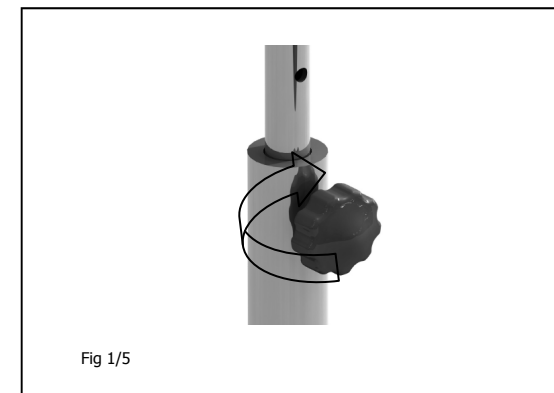
6. Replacement parts

The modular design of the stand allows that each individual part of the Hoo-kOn™ may be purchased to replace lost or damaged parts without the need to replace the entire stand. Please see page 9 for individual part details.

3. First ensure that the Stabilising & Release collar slit end is aligned with the bottom of the base pole. Insert the Base Pole with collar into Central Support. Pushing down the Base Pole firmly and twisting clockwise the Stabilising & Release collar into the Central Support the two sections will hold in place.



4. Insert the Telescoping pole into top of the Base Pole. Turning the Pole Securing Screw anti-clockwise will result in the telescoping pole being with-drawn into the body of the Base pole. By raising the Telescoping pole to the desired height and turning the Pole Securing Screw clockwise this will lock securely both poles with Telescoping pole at your desired height.



8. Hoo-kOn™ Modular Parts Replacement Details

IMPORTANT: The details provided within the table below is for reference to the reordering of any lost or damaged parts, when you initially receive your Hoo-kOn™ stand the number of items per part that you should have in your carrying case is shown on page 2 of this booklet.

Part Detail	Model No.	Reorder Quantity Packed
Central Support	401421	1
Stabilising Foot	401422	3
Telescoping Pole Cradle	401423	2
Stabilising & Release Collar	401424	2
Base Pole Chrome Steel	401425	1
Telescoping Pole Chrome Steel	401426	1
Central Support Leg Chrome Steel	401427	3
Cradle bracket	4010111	2
Pole Securing Screw	401429	4
IV/Fluid Hook (15mm/21mm)	4002111	6
Hoo-kOn™ Carrying case	401430	1

2. Safety Information

When using the Hoo-kOn™ drip stand, basic safety precautions should always be observed, including the following:

1. Stand the device on a flat and even surface.
2. Ensure that the feet are **firmly** pushed into legs and the legs are **firmly** pushed within central support before attempting to attach anything to the stand
3. **Do not** use the stand as an aid to support the weight of an individual.
4. Always assemble the stand as per the instructions before attempting to attach any items to it, **ensure** by picking up the stand after assembly that the Base pole is fully secured to the Central support with the use of the Stabilising & Release collar and that the telescoping pole is secured to the base pole with the pole securing screw.
5. **Always** ensure when clamping an IV pump to the Base pole that the pump is always facing over a leg of the stand.

6. Be careful not to trip over the legs of the stand when working around it .
7. **Do not** attempt to use if all the parts as shown in Fig 1/1 are not available.

IMPORTANT: The Hoo-kOn™ stand will hold an IV pump up to the weight of 6.7 kgs along with up to a 2ltr fluid bag from each IV/fluid holder.

CAUTION: Applying weights above those stated will result in the stand becoming unstable when in use.

PLEASE KEEP THESE INSTRUCTIONS FOR FURTHER USE.

Height Recommendation

Do not raise above the height of 1.5 metres if not using a pump or monitor on the stand. Maximum height of 1.8 metres when using pump/monitor.

3. Use & Function

IMPORTANT: The Hoo-kOn™ has been designed for Community and Emergency use when dealing with patients that require IV/fluid therapy. It has been designed in a modular form for ease of storage and cleaning whilst also lightweight so as to be carried from one site to another easily.

Assembling the Hoo-kOn™ Stand

1. Insert a Stabilising foot into a Central Support leg. Ensure that feet are pushed well into the body of the legs.



Fig 1/2

2. Insert legs firmly into the body of Central Support.

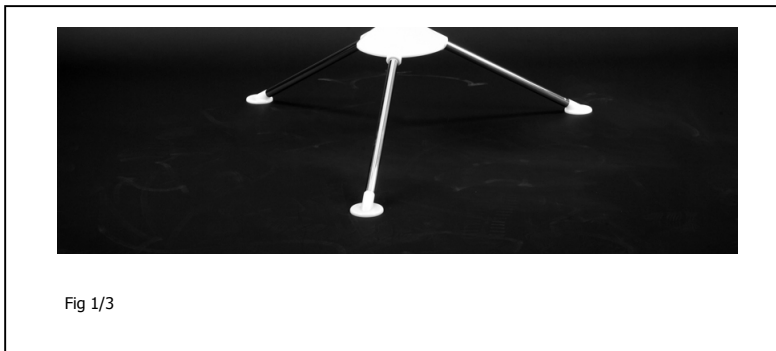


Fig 1/3

7. Cleaning & Disinfection instructions

Warning: These instructions should be used inline with the guidance provided by your infection control department and inline with best practice guidelines.

1. Decontamination Process is a combination of processes (including cleaning, disinfection and sterilisation) used to make the Hoo-kOn™ stand safe for further use on patients and handling by staff by reducing the risk of transmission of infectious agents.

2. Ensure that hands are cleaned and dried prior to assembling the Stand.

3. Assessment of risk the level of decontamination required is determined by the nature of the equipment and the risk it poses for transmission of infection. The classification of infection risk associated with decontamination of Hoo-kOn™ Stand:

Risk	Application	Recommendation
Low	Items in contact with healthy skin or mucous membranes or not in contact with Patient.	Thorough Cleaning

4. The simplest, and often quite adequate, method of disinfection is by the use of hot water and detergent followed by thorough drying. However all parts may be autoclaved.

5. General purpose detergent diluted with hot water or detergent wipe should be used for general cleaning or as recommended by your local infection control policy. Any solution must be discarded on completion of use. The carrying case is able to be cleaned with a detergent wipe or with hot water and general purpose detergent.